


These samples "look" poor because we made the file size small in order to make them easier to download.  
 The music you order from us would be the professional quality you are used to.

# FlatRock

All Instruments Are Created Equal™

Hamilton

## E♭ SAXOPHONES

The Notes You Need:    
 F# G B $\flat$  B $\flat$  C D E F# G

*funky*  
 ♩ = 90

Melody

TOP Riff  
 BOTTOM

Bass Line



Melody

TOP Riff  
 BOTTOM

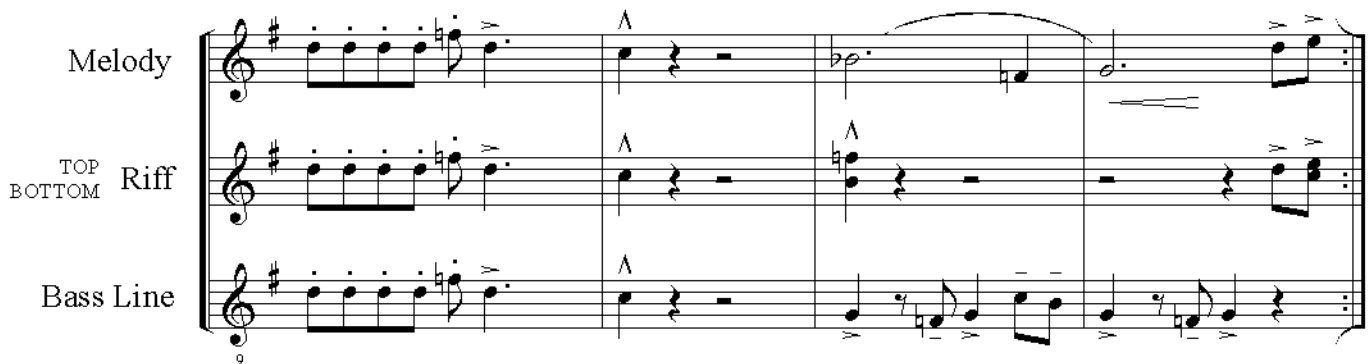
Bass Line



Melody

TOP Riff  
 BOTTOM

Bass Line



**FLUTE**

# M.S. Blues

*All Instruments Are Created Equal™*

Hamilton

The Notes You Need:

B<sup>b</sup> C D<sup>b</sup> D<sup>#</sup> E<sup>b</sup> F G A<sup>b</sup> A<sup>#</sup> B<sup>b</sup>

*jazz, swing 8<sup>ths</sup>*  
♩ = 110

Melody

TOP Riff  
BOTTOM

Bass Line

Melody

TOP Riff  
BOTTOM

Bass Line

Melody

TOP Riff  
BOTTOM

Bass Line

**PERCUSSION**

# Joe's Tune

All Instruments Are Created Equal™

*boogaloo*

Hamilton

$\text{♩} = 100$

Musical score for the first system of 'Joe's Tune'. It includes five staves: Melody, Riff (TOP/BOTTOM), Bass Line, Snare/Bass Drum, and Sus. Cymbal/Cow Bell. The key signature has two flats and the time signature is 4/4. Dynamics include *f* and *mf*. The word *simile* is used for the drum parts.

Musical score for the second system of 'Joe's Tune'. It includes five staves: Melody, Riff (TOP/BOTTOM), Bass Line, Snare/Bass Drum, and Sus. Cymbal/Cow Bell. The system concludes with a first ending bracket labeled '1.' and a repeat sign. A measure rest of 5 is indicated at the beginning of the system.

# M.S. Blues

Performance Arrangement

Hamilton

**TROMBONE**  
**BARITONE B.C.**  
**BASSOON**  
**STRING BASS**

B $\flat$  Blues Scale for Solos: 

*jazz,*  
*swing 8<sup>ths</sup>*  
♩ = 110



*mf* *simile*

**A**



*f*



**B** §

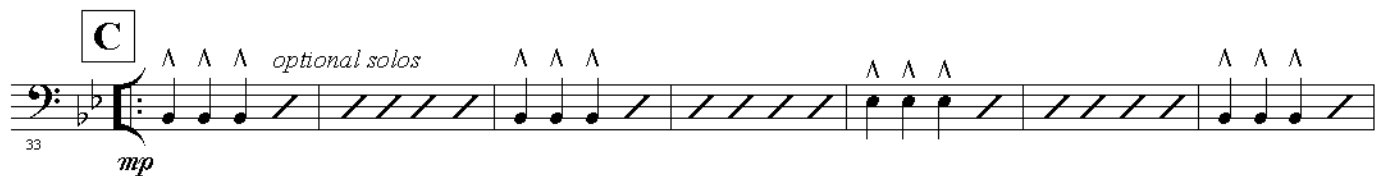


*simile*

to coda ⊕



**C** optional solos

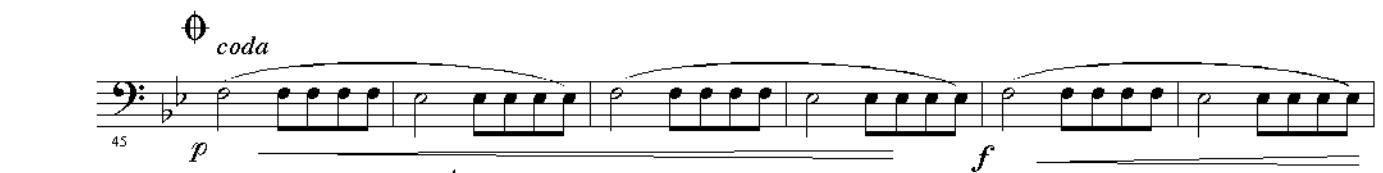


*mp*



*D.S. al Coda*  
*(after last solo)*  
last time only

⊕ coda



*p* *f*



*ff*

v2.

# Joe's Tune

Performance Arrangement

Hamilton

TENOR SAX

"C" Blues Scale for Solos:



*boogaloo*

$\text{♩} = 100$



A



9



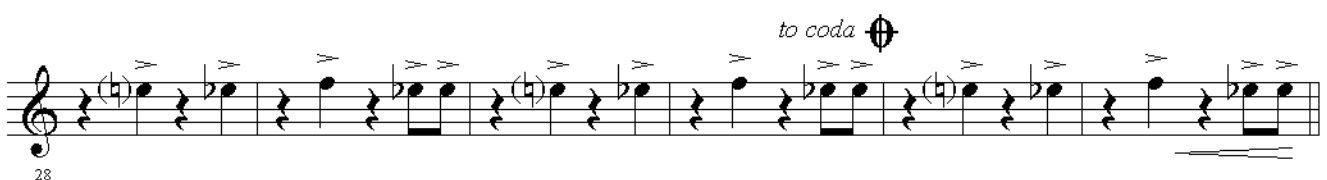
13



18



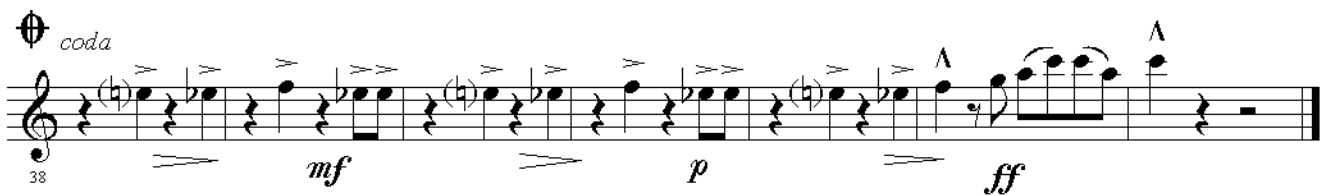
23



28



34



38

# FlatRock

Performance Arrangement

Hamilton

## TRUMPET 1

"C" Blues Scale for Solos: 

*funky* ♩.90



*mf*

**A**



9



13

**B** §



18

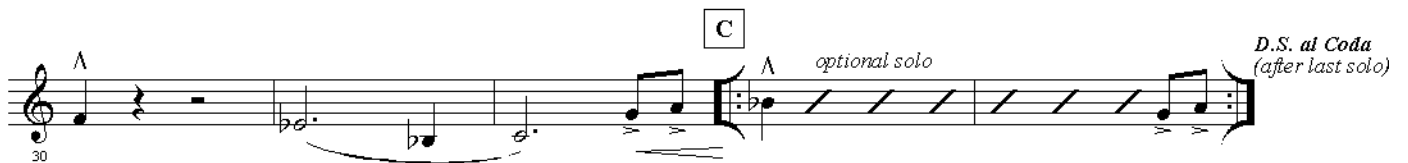
*f*

to coda ⊕



24

**C** optional solo



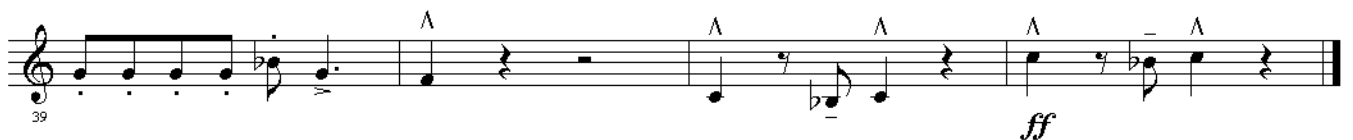
30

*D.S. al Coda*  
(after last solo)

⊕ coda



35



39

*ff*

***Klezmer Series for Band:***

Quick! Send me **Honga!**..... (medium easy, concert band) — **\$32.99**

Quick! Send me **The Mazeltov March**..... (medium easy, concert band) — **\$32.99**

**SPECIAL OFFER**.....both for only — **\$59.99**

***All Instruments Are Created Equal:***

Quick! Send me **FlatRock**..... (easy funk, any size band) — **\$29.99**

Quick! Send me **M.S. Blues**..... (easy jazz, any size band) — **\$29.99**

Quick! Send me **Joe's Tune**..... (easy boogaloo, any size band) — **\$29.99**

**SPECIAL OFFER**.....all three for only — **\$79.99**

two for only — **\$54.99**

**TOTAL MUSIC** \_\_\_\_\_

Please add \$2.50, plus \$1.00 per arrangement, for Priority Mail \_\_\_\_\_

Mass. residents, please add 5% sales tax (if not exempt) \_\_\_\_\_

**TOTAL ORDER** \_\_\_\_\_

**FOUR WAYS TO ORDER !**

**1. FAX** purchase order number to:  
**978/287-0828**

**2. TELEPHONE** purchase order number to:  
**888/386-8860**

**3. E-MAIL** purchase order number to:  
**tunes@hamiltunes.com**

**4. MAIL** check or purchase order number to:  
**HamilTunes**  
**P.O. Box 1001**  
**Concord, MA 01742**

**name** \_\_\_\_\_

**school** \_\_\_\_\_

**address** \_\_\_\_\_

**city, state, zip** \_\_\_\_\_

**telephone** \_\_\_\_\_

**fax** \_\_\_\_\_

**e-mail** \_\_\_\_\_

**purchase order #** \_\_\_\_\_

**SATISFACTION GUARANTEED**

call for free samples: **888/386-8860**

check us out on the web: **www.hamiltunes.com**